



Solar-Fizz
S - 30

swissmade 

Congratulations to your decision to buy a **Solar-Fizz**.

The **Solar-Fizz** is a Swiss Quality Product and it has been manufactured with great Care and high class workmanship.

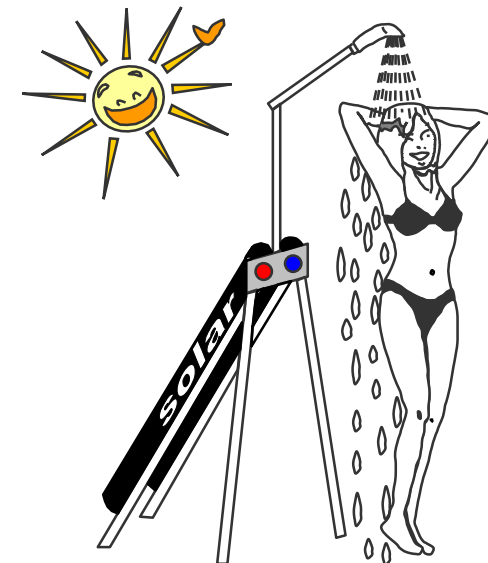
Please read the Solar-Fizz Owners Manual throughout before assembling and connecting the Solar-Fizz.

Make sure not to ignore any advise written in this Manual in order to keep your Solar-Fizz in good working Condition.

Should you experience any technical Problems, please contact your Seller or contact us directly trough:

www.solar-fizz.ch

We hope you will enjoy your new **Solar-Fizz**.



- 1 – During the freezing Period, please empty the **Solar-Fizz** completely and store it in a dry place. The valves of the mixing battery should be left open. We advise you to store the **Solar-Fizz** in the transport Box.
- 2 – The solarcollector must **not** be cleaned with any chemical detergents. **Please use regular water only.**
- 3– The shower top can be cleaned with any regular Lime detergent.
- 4 – Slight Traces of condensed water on the inside of the Collector tube does not affect the operation of the **Solar-Fizz**.
- 5 – The **Solar-Fizz** should be transported or stored without water only.
- 6 – In Case of defective Parts, use only genuine **Solar-Fizz** Parts. Those can be ordered as well as the below shown popular options trough:

www.solar-fizz.ch

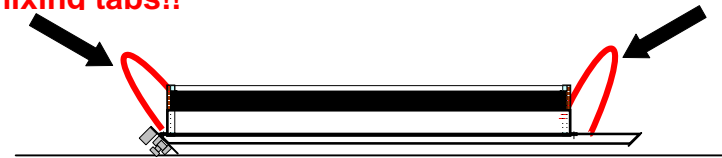
Your notes:

Note

The packing Box of your **Solar-Fizz** is reusable. It is advisable to transport or store the **Solar-Fizz** in the cardboard. Please treat the cardboard carefully and store it in a dry place.

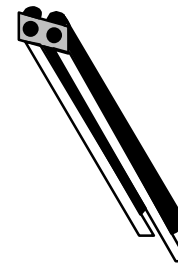
- 1 Lift the **Solar-Fizz** carefully out of the the cardboard, and lay the whole inner Packing set flat to the ground.
(2 people)

Please make sure not to lay the Solar-Fizz on the mixing tabs!!

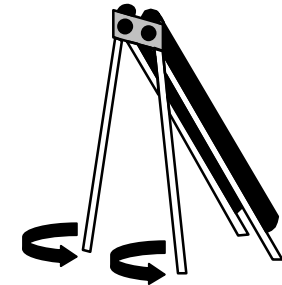


- 2 Take the 2 back legs out of the box and place them alongside the **Solar-Fizz**. (Velcro)

3



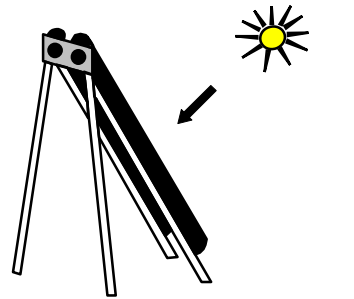
Lift up the **Solar-Fizz** on the top side.



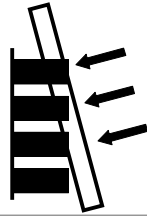
Take the 2 supporting legs from the cardboard and turn these as shown into the threads on the lower surface of the **Solar-Fizz**.

Clockwise direction

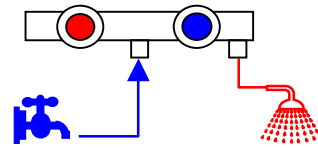
- 4 Align the **Solar-Fizz** as accurately as possible to the midday sun. Make sure that no shade falls on the collector.



- 5 Now press the showerhead holder in the 4 black clips behind the mixer. **(A little force is needed)**



- 6 Screw the shower hose to the ½" connector on the **right** side of the mixing tap. Screw the cold water hose into the connector on the **middle** of the mixing battery.

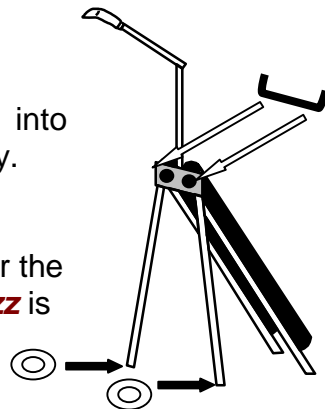


Check thereby whether the seal is inserted.
Hang the shower into the shower holder.

7

Take the top guard and press it into the nipples of the Mixing Battery.

Put the 2 perforated disks under the supporting legs, if the **Solar-Fizz** is set up in soft ground.



- 1 – Take of the protection foil from the tube collectors.
- 2 – **!! Shut the cold and hot water valves fully !!** (in Clockwise direction)
- 3 – Connect you cold water garden hose to the mixing battery. (Connection in the centre, ½" inch adaptor)
- 4 – Opening the tap of your house connection. **(appr. 1 turn)**
- 5 – Open the hot water mixing battery valve **(red)** on the **Solar-Fizz**. **Important:** The cold water valve **(blue)** on the **Solar-Fizz** must **not** be opened at this time.
- 6 – Wait until the water comes out of the flexible shower. This can take up to 20 minutes.
- 7 – Shut off the hot water mixing valve **(red)** again. Wait until the water flow from the shower stops.
- 8 – Your **Solar-Fizz** is now ready to work for you. The sun will do the rest for you.



!! Danger !!



Do not expose yourself under the Shower before you have adjusted the water temperature.

Since the water temperature can be very hot, you could take a risk to be burned from boiling water.

Storage

Page 7

To store the **Solar-Fizz** during the Winter:

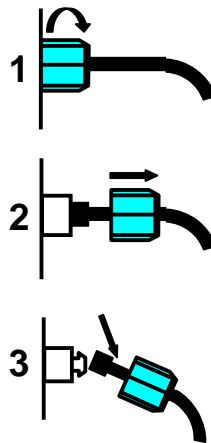
Remove the fresh water supply, and unscrew the blue nipples on the bottom at the Collectors.

Pull off the flexible plastic tube in a 30 degree angle to the nipples. (See figure 1 + 2 + 3)

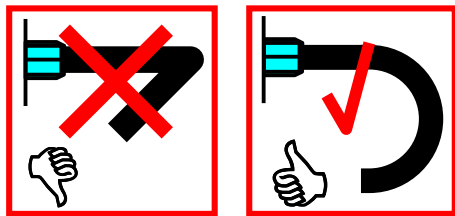
Opening the two valves of the mixer.
(The water now flows from the Collectors)

Leave opened the valves.

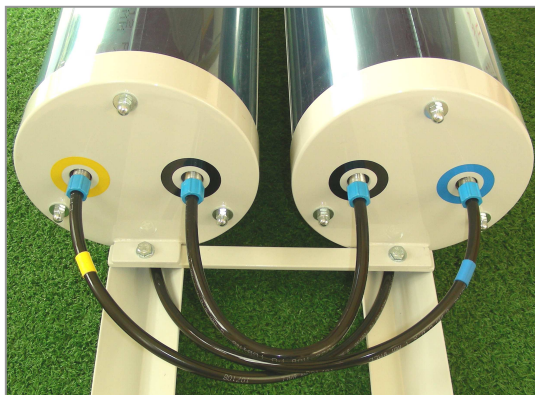
Use controlled force to do this



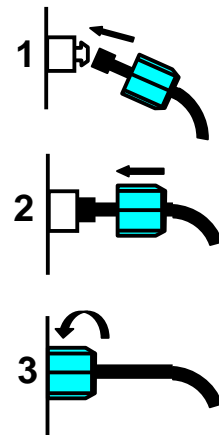
Go the opposite direction in order to prepare the **Solar-Fizz** for the new Season.



!! Do not break or fold the plastic tube !!



Please connect the proper colored tubes to the nipples



Important

Page 8

The **Solar-Fizz** should be placed in a sunny spot.

The **Solar-Fizz** should be not exposed to the sun for long periods of time, if the shower does not contain water.

Please make sure, that the water hose line to the **Solar-Fizz** lays in the shadow of the grass.

Parts of the **Solar-Fizz** can be damaged, if they are misused.

Please handle the **Solar-Fizz** with Care in order to avoid any possible damage to the hardware.

Note:

Do **NOT** use the Water from the **Solar-Fizz** as drinking water.

If you do not use the **Solar-Fizz** for more than 3 days, please change the Water in the Tubes. To do this, please open the Hotwater Valve (**RED**) and let the hot water flow for about 10 minutes to make sure that all the old water has been replaced with fresh water.

Check for your local use-water regulations .



!! You could risk your Life !!

Please avoid using the Solar-Fizz during Thunder Storms



www.solar-fizz.ch