



Solar-Fizz E - 15

swissmade 



Congratulations to your decision to buy a **Solar-Fizz**.

The **Solar-Fizz** is a Swiss Quality Product and it has been manufactured with great Care and high class workmanship.

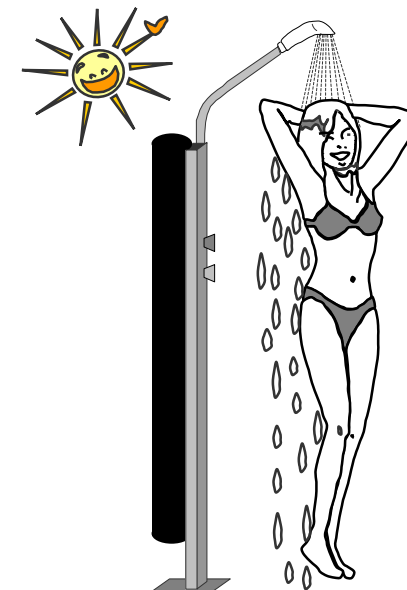
Please read the Solar-Fizz Owners Manual throughout before assembling and connecting the Solar-Fizz.

Make sure not to ignore any advise written in this Manual in order to keep your Solar-Fizz in good working Condition.

Should you experience any technical Problems, please contact your Seller or contact us directly trough:

www.solar-fizz.ch

We hope you will enjoy your new **Solar-Fizz**.

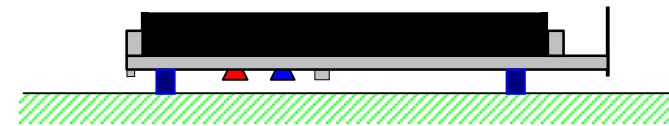


- 1 – During the freezing Period, please empty the **Solar-Fizz** completely and store it in a dry place. The valves of the mixing battery should be left open. We advise you to store the **Solar-Fizz** in the transport Box.
- 2 – The solar collector must **not** be cleaned with any chemical detergents. **Please use regular water only.**
- 3 – The shower top can be cleaned with any regular Lime detergent.
- 4 – The **Solar-Fizz** should be transported or stored without water only.
- 5 – In Case of defective Parts, use only genuine **Solar-Fizz** Parts. Those can be ordered as well as the below shown popular options trough:

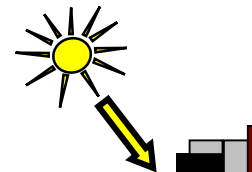
www.solar-fizz.ch

Your notes:

- 1 Lift the **Solar-Fizz** carefully out of the the cardboard and set flat to the ground.



- 2 The **Solar-Fizz** uses 4 Bolts to be screwed onto any concrete plate. (6mm)



You can adopt the **Solar-Fizz** on a concrete or a wodden plate.

To drill the holes, please use the enclosed schematic drawing.

Please make sure to align the collector as accurately as possible to the midday sun.

Please make sure that no shade from trees or buildings falls on the collector.

- 3 Screw the shower hose to the mixing tap by hand.
Check thereby whether the seal is inserted.
Hang the shower into the shower holder.

Optional Accessory

Ground anchor



**Height adaptable
Showerholder**



- 1 – **Shut the cold and hot water valves fully.**
(in Clockwise direction)
- 2 – Connect you cold water garden hose to the mixing battery. (½“ inch adaptor)
- 3 – Open the cold water garden hose valve.
(appr. 1 turn)
- 4 – Open the hot water mixing battery valve **(red)** on the **Solar-Fizz**.
Important: The cold water valve **(blue)** on the **Solar-Fizz** must **not** be opened at this time.
- 5 – Wait until the water comes out of the flexible shower.
This can take up to 10 minutes.
- 6 – Shut off the hot water mixing valve **(red)** again.
Wait until the water flow from the shower stops.
- 7 – Your **Solar-Fizz** is now ready to work for you.
The sun will do the rest for you.



!! Danger !!



Do not expose yourself under the Shower before you have adjusted the water temperature.

Since the water temperature can be very hot, you could take a risk to be burned from boiling water.

Storage

Page 7

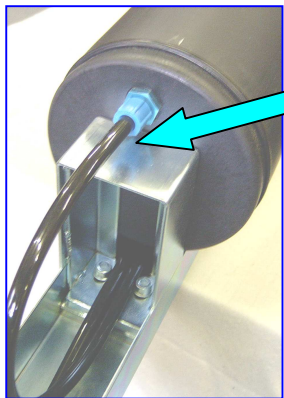
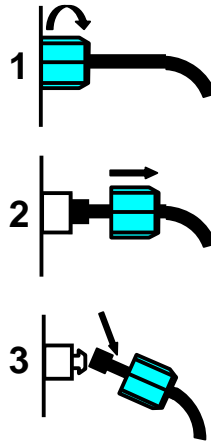
To store the **Solar-Fizz** during the Winter:

Remove the fresh water supply, and unscrew the blue nipple on the bottom at the Collector.

Pull off the flexible plastic tube in a 30 degree angle to the nipple. (See figure 1 + 2 + 3)

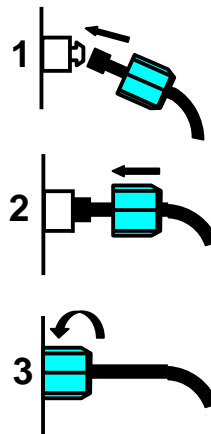
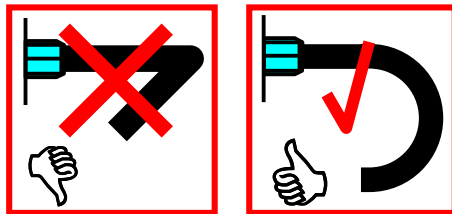
Opening the two valves of the mixer.
(The water now flows from the Collectors)

Leave opened the valves.



(Use controlled force to do this)

Go the opposite direction in order to prepare the **Solar-Fizz** for the new Season.



!! Do not break or fold the plastic tube !!

Important

Page 8

The **Solar-Fizz** should be placed in a sunny spot.

The **Solar-Fizz** should be not exposed to the sun for long periods of time, if the shower does not contain water.

Please make sure, that the water hose line to the **Solar-Fizz** lays in the shadow of the grass.

Parts of the **Solar-Fizz** can be damaged, if they are misused.

Please handle the **Solar-Fizz** with Care in order to avoid any possible damage to the hardware.

Note:

Do **NOT** use the Water from the **Solar-Fizz** as drinking water.

If you do not use the **Solar-Fizz** for more than 3 days, please change the Water in the Tubes. To do this, please open the Hotwater Valve (**RED**) and let the hot water flow for about 10 minutes to make sure that all the old water has been replaced with fresh water.

Check for your local use-water regulations .



www.solar-fizz.ch